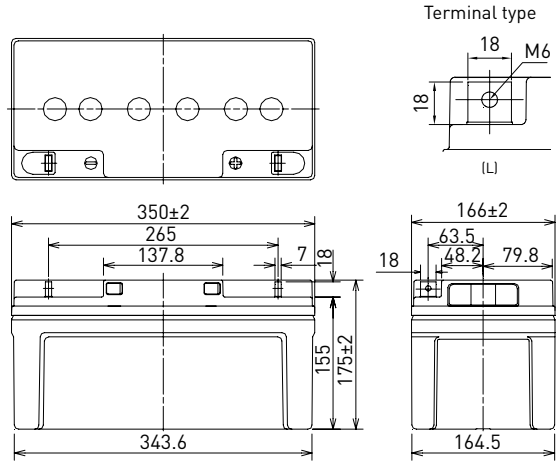


LC-QA1270P

FOR STANDBY POWER SUPPLIES.  
EXPECTED TRICKLE DESIGN LIFE: 15 YEARS AT 20°C.

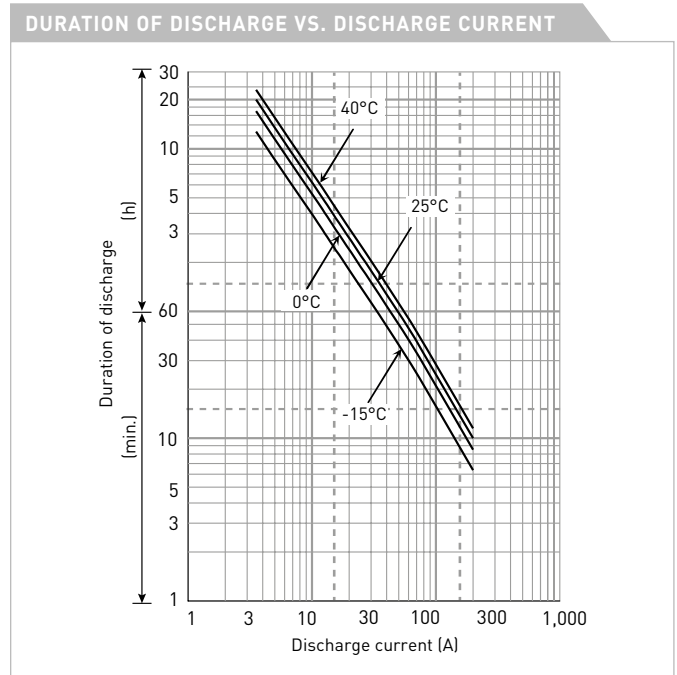
DIMENSIONS (MM)



Contents indicated (including the recycle marking, etc.) are subject to change without notice.

Battery case resin: flame retardant (UL94 V-0)

SPECIFICATIONS		
Name	LC-QA1270P	
Nominal voltage	12V	
Nominal capacity (20 hour rate)	70Ah	
Dimensions	Length	350mm
	Width	166mm
	Height	175mm
Approx. mass	23.5kg	
Terminal	M6 bolt/nut	
Capacity (25°C)	20 hour rate	71Ah
	10 hour rate	65Ah
	3 hour rate	55Ah
	1 hour rate	46Ah
Impedance	Fully charged battery (25°C)	5mΩ
Temperature dependency of capacity (20 hour rate)	40°C	102%
	25°C	100%
	0°C	85%
	-15°C	65%
Self-discharge (25°C)	After 3 month	91%
	After 6 month	82%
	After 12 month	64%



WATT TABLE (25°C)														[Wattage/battery]	
Cut-off	10min.	15min.	20min.	30min.	45min.	1h	1.5h	2h	3h	4h	5h	6h	10h	20h	
9.6V	1,977	1,504	1,234	916	676	549	386	333	240	181	148	130	75.5	41.7	
9.9V	1,947	1,491	1,227	909	660	520	367	323	234	177	146	127	74.0	41.5	
10.2V	1,867	1,463	1,197	899	655	519	365	311	224	168	138	122	73.1	41.2	
10.5V	1,814	1,436	1,173	884	641	509	358	306	221	166	137	120	73.0	39.8	
10.8V	1,704	1,357	1,153	865	626	499	351	299	219	165	135	119	12.5	39.4	

AMPERE TABLE (25°C)														[Ampere/battery]	
Cut-off	10min.	15min.	20min.	30min.	45min.	1h	1.5h	2h	3h	4h	5h	6h	10h	20h	
9.6V	200	146	118	85.9	62.8	48.4	34.8	27.1	19.4	15.0	12.5	10.5	6.50	3.53	
9.9V	199	144	117	85.0	61.2	47.7	33.9	27.0	19.1	14.9	12.4	10.4	6.50	3.53	
10.2V	197	140	116	83.8	60.9	47.3	33.7	26.8	18.9	14.8	12.3	10.3	6.50	3.53	
10.5V	187	136	110	82.7	59.5	45.6	33.3	26.7	18.4	14.7	12.1	10.2	6.50	3.53	
10.8V	177	132	108	81.4	51.1	41.0	29.4	24.9	17.8	14.4	12.0	10.1	6.50	3.47	

All mentioned values are average values

LC-QA1270P

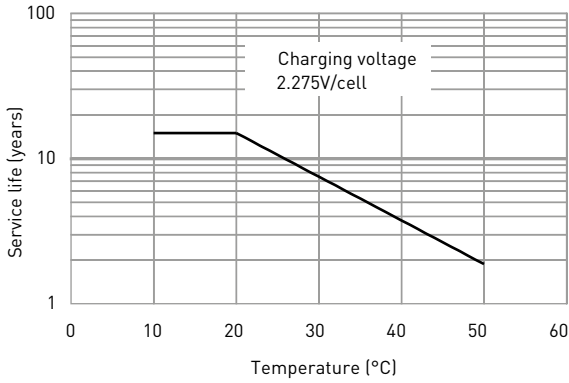
CHARGING METHOD (25°C)

**Trickle use** Control voltage: 13.6V - 13.8V  
Initial current: 10.5A or smaller

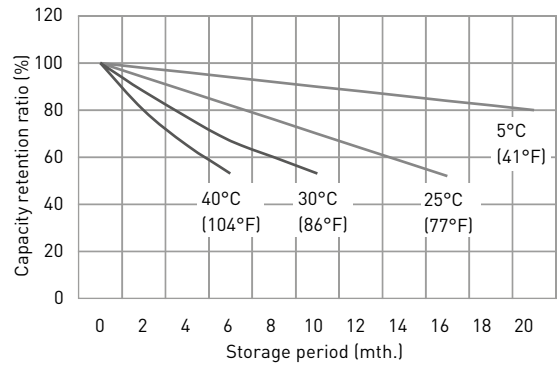
CUT-OFF VOLTAGE

<b>Discharge current</b>	3.50A - 14.0A	14.0A - 35.0A	35.0A - 70.0A	70.0A - 140A	140A - 210A
<b>Cut-off voltage</b>	10.5V	10.2V	9.9V	9.3V	8.7V

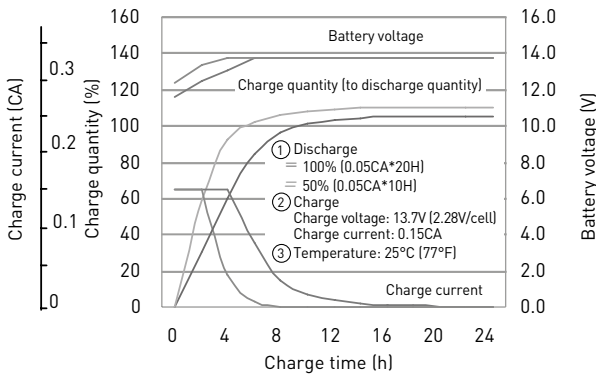
INFLUENCE OF TEMPERATURE ON TRICKLE LIFE



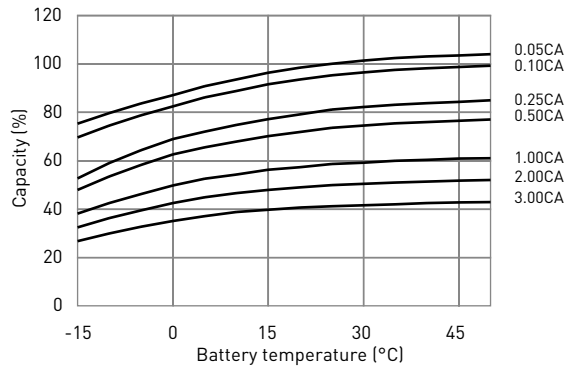
RESIDUAL CAPACITY TEST RESULT



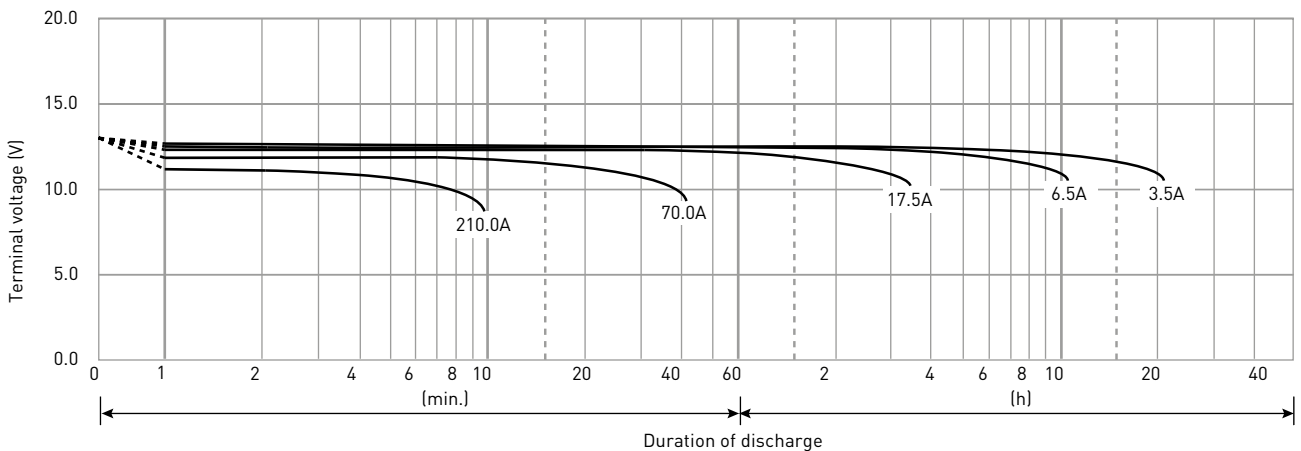
CONSTANT-VOLTAGE CONSTANT-CURRENT CHARGE CHARACTERISTICS FOR TRICKLE USE



DISCHARGE CAPACITY BY TEMPERATURE AND BY DISCHARGE CURRENT



DISCHARGE CHARACTERISTICS



The data in this document are for descriptive purposes only and are not intended to make or imply any guarantee or warranty. Regarding handling and safety please consult our VRLA technical handbook chapter 1.