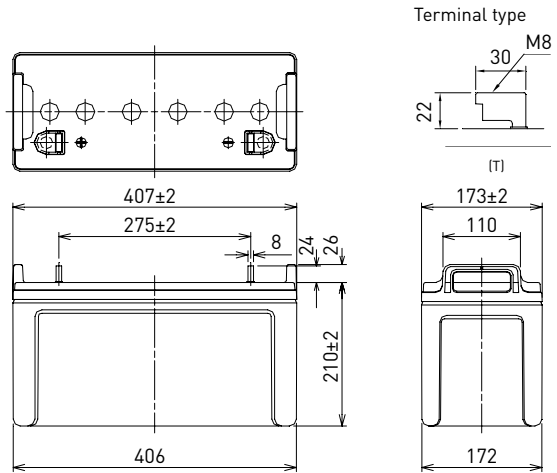


LC-QA12110TP

FOR STANDBY POWER SUPPLIES.
EXPECTED TRICKLE DESIGN LIFE: 15 YEARS AT 20°C.

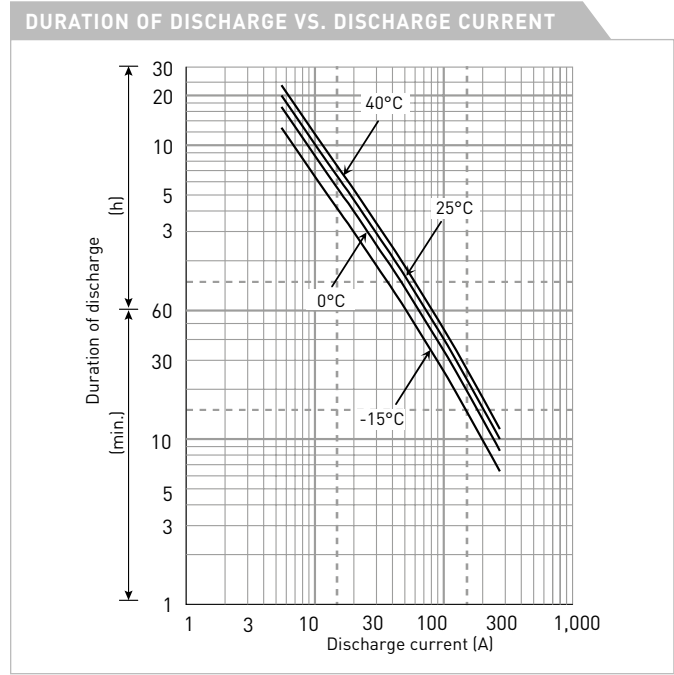
DIMENSIONS (MM)



Contents indicated (including the recycle marking, etc.) are subject to change without notice.

Battery case resin: flame retardant (UL94 V-0)

SPECIFICATIONS		LC-QA12110TP
Name		LC-QA12110TP
Nominal voltage		12V
Nominal capacity (20 hour rate)		110Ah
Dimensions	Length	407mm
	Width	173mm
	Height	236mm
Approx. mass		36.0kg
Terminal		M8 T-shape
Capacity (25°C)	20 hour rate	110Ah
	10 hour rate	101Ah
	3 hour rate	86Ah
	1 hour rate	75Ah
Impedance		Fully charged battery (25°C) 4mΩ
Temperature dependency of capacity (20 hour rate)	40°C	102%
	25°C	100%
	0°C	85%
	-15°C	65%
Self-discharge (25°C)	After 3 month	91%
	After 6 month	82%
	After 12 month	64%



WATT TABLE (25°C)														[Wattage/battery]		
Cut-off	10min.	15min.	20min.	30min.	45min.	1h	1.5h	2h	3h	4h	5h	6h	10h	20h		
9.6V	2,987	2,270	1,872	1,391	1,017	793	578	482	353	279	232	197	124	63.7		
9.9V	2,920	2,215	1,827	1,358	995	772	563	469	346	273	225	192	120	63.2		
10.2V	2,855	2,136	1,761	1,314	984	751	548	463	340	267	218	186	118	62.7		
10.5V	2,764	2,110	1,748	1,303	968	730	532	453	334	264	215	185	117	62.1		
10.8V	2,522	2,010	1,739	1,261	933	720	525	442	328	258	212	183	116	61.6		

AMPERE TABLE (25°C)														[Ampere/battery]		
Cut-off	10min.	15min.	20min.	30min.	45min.	1h	1.5h	2h	3h	4h	5h	6h	10h	20h		
9.6V	272	212	175	133	96.7	76.7	53.6	43.2	30.2	23.3	19.7	16.1	10.4	5.50		
9.9V	269	211	174	132	94.0	76.4	52.6	42.8	29.6	23.1	19.4	16.0	10.3	5.50		
10.2V	268	210	172	130	93.5	75.9	52.1	42.3	29.4	22.9	19.1	15.9	10.2	5.50		
10.5V	245	198	164	128	92.5	75.4	51.5	41.8	28.8	22.6	19.0	15.7	10.1	5.50		
10.8V	232	192	160	126	79.9	65.4	46.4	39.7	28.1	22.3	18.9	15.5	10.0	5.39		

All mentioned values are average values

LC-QA12110TP

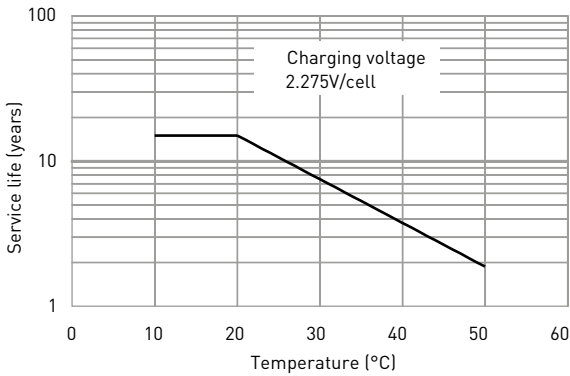
CHARGING METHOD (25°C)

Trickle use Control voltage: 13.6V - 13.8V
Initial current: 16.5A or smaller

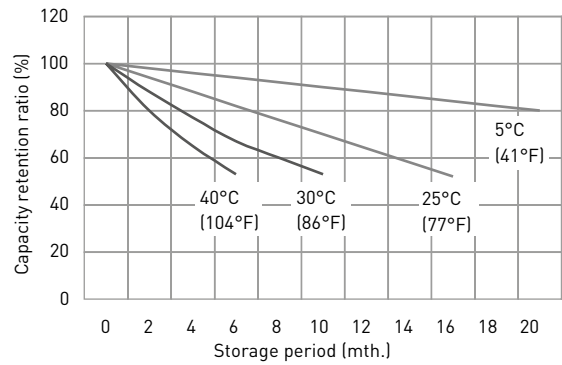
CUT-OFF VOLTAGE

Discharge current	5.50A - 22.0A	22.0A - 55.0A	55.0A - 110A	110A - 220A	220A - 330A
Cut-off voltage	10.5V	10.2V	9.9V	9.3V	8.7V

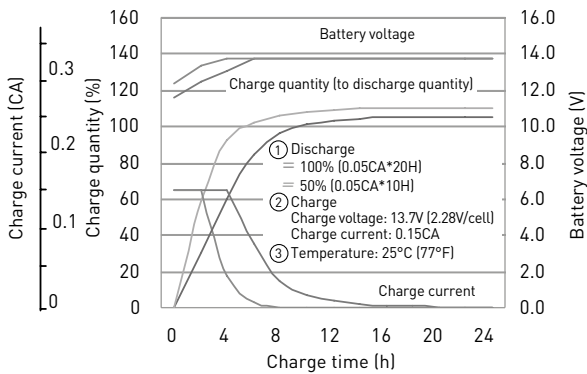
INFLUENCE OF TEMPERATURE ON TRICKLE LIFE



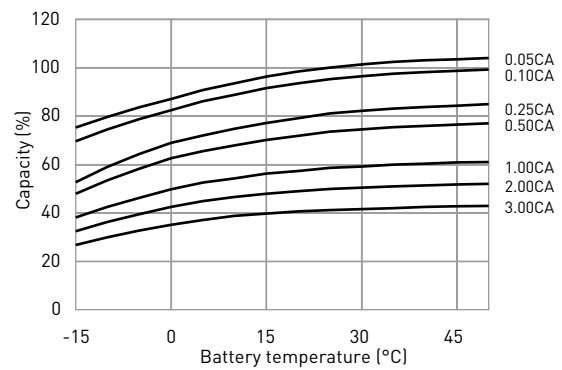
RESIDUAL CAPACITY TEST RESULT



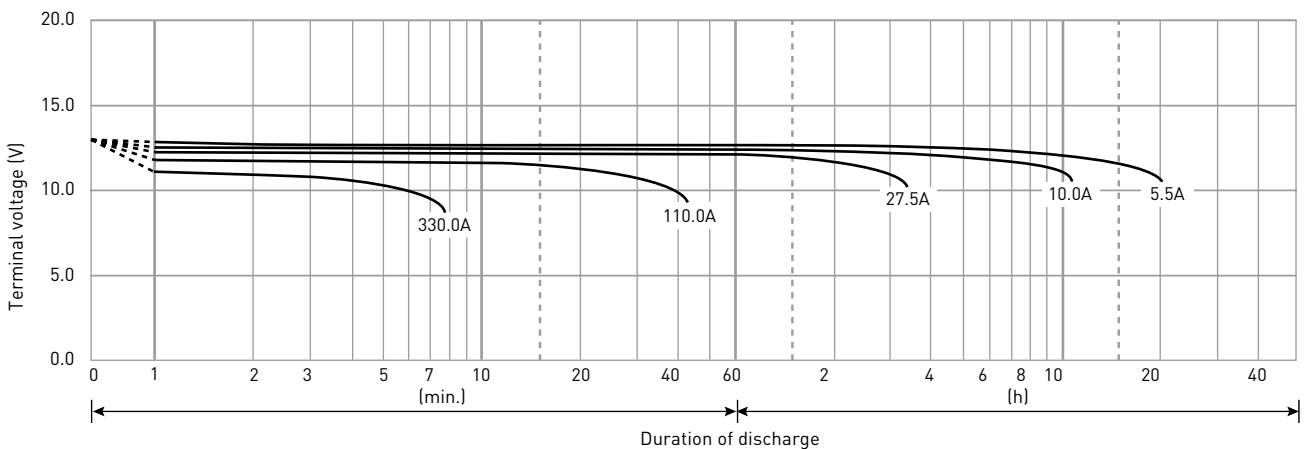
CONSTANT-VOLTAGE CONSTANT-CURRENT CHARGE CHARACTERISTICS FOR TRICKLE USE



DISCHARGE CAPACITY BY TEMPERATURE AND BY DISCHARGE CURRENT



DISCHARGE CHARACTERISTICS



The data in this document are for descriptive purposes only and are not intended to make or imply any guarantee or warranty. Regarding handling and safety please consult our VRLA technical handbook chapter 1.